

Solstice

Designer: Studioepepe
Year: 2023

A dense, almost mysterious light is filtered through soft and enveloping materials. Luminosity and transparencies fluctuate, creating repetitions of lights and shadows, solids, and voids. Inspired by Object Art and in particular by the works of Enrico Castellani, these elegant fibreglass sculptures – Solstice applique – and Equinox cocoon-suspension lamp – reinforce the strong understanding between Tacchini and Studioepepe.

Developed by Tacchini in Italy

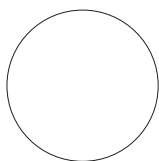
Dimensions (cm)

Cod. OSOL60

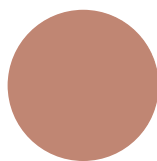


W 40 H 60

Colors



White



Pink



Green



Studioepe

Internationally recognized for its eclectic and multi-faceted approach, Studioepe adopts an imaginative and multidisciplinary approach towards the world of design. The studio's distinctive signature is eloquently expressed in all the heterogeneous projects in which it has been engaged: large-scale projects in the hôtellerie field, the creation of displays for showrooms, boutiques and fair booths, or the interior design of private homes. Founded in 2006, the agency has maintained a highly recognizable identity based upon experimenting, citations and unexpected thought associations which are aimed at fostering unique projects that respect the individuality of the Client. Studioepe's projects are characterized by a strong emotional and aesthetic impact, based upon the finding the ideal balance between formal rigour and poetic vision, the ceaseless search to blend contemporary languages and codes. In the Studio's works, the unexpected becomes a constant: the bold interplay between materials, fields of colour that become the expression of space, and details that are no longer mere decoration, but delicately woven storytelling.