

FLORIDA
REF F

RECOMMENDED FOR
Contract use

COMPOSITION
Raw hide leather (corrected grain)
through dyeing aniline

TEAR RESISTANCE
>20N (UNI EN ISO 3377-1)

CRACK RESISTANCE
50.000 Cycles (UNI EN ISO 5402)

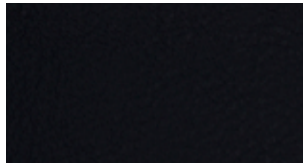
DRY RUB FASTNESS
1.000 Cycles Vol. >4 Grey scale
(UNI EN ISO 11640)

LIGHT FASTNESS
Vol. >6 Blue scale
(UNI EN ISO 105-B02)

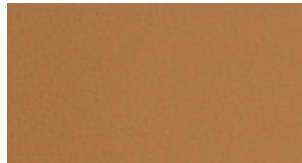
FIRE TEST
BS 5852-0 - BS 5852-1
BS5852 CRib5 (optional)
UNI EN 1021-1
UNI EN 1021-2
NFPA 260/UFAC
California TB 117 Section E -AB-2998



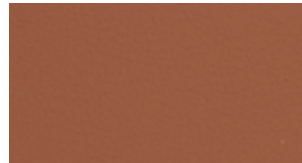
Example: F15 - CAMEL



F10 - BLACK



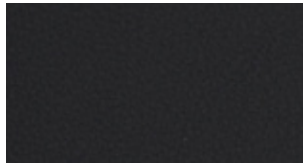
F15 - CAMEL



F20 - DARK ORANGE



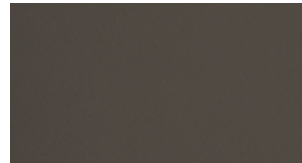
F25 - YELLOW



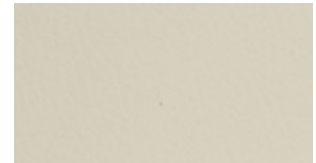
F27 - CHARCOAL GREY



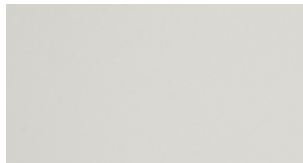
F51 - BROWN



F52 - DARK BROWN



F53 - BEIGE



F54 - WHITE



F55 - GREEN



F56 - DARK GREEN



OUTDOOR (UV PRO)
REF CAT 4

CHARACTERISTICS
Vinyl / Imitation leather

WEIGHT
556

COMPOSITION
74% Polyvinylchloride (Vinyl),
23% Polyester, 3% Polyurethane

COLOUR FASTNESS
6

MARTINDALE
100,000

NFPA 260
Yes

WYZENBEEK
200,000

BS 5852 SOURCE 0
Yes

REPEATS
V:plain H: plain

CAL 117
Yes

WIDTH
140

WASHING CONDITIONS



Example: OU23 - Laurel



OU06 - BEIGE



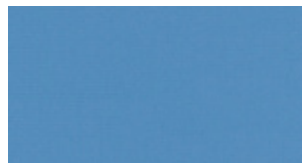
OU23 - LAUREL



OU33 - MARINE



OU38 - INK



OU41 - AQUARIUS



OU53 - TEA



OU55 - PINE



OU58 - BANANA



TEMPO (MAHARAM)
REF CAT 6

COMPOSITION
100% Polyester

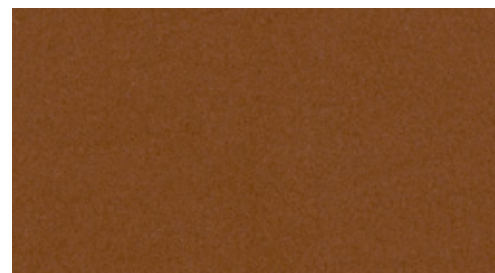
WASHING CONDITIONS



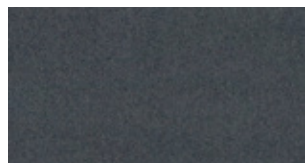
MARTINDALE
100.000 cycles

WIDTH
140 cm

WEIGHT
700 gr/lm



Example: TE22 - Flaxseed



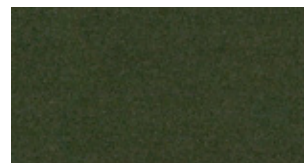
TE02 - GRANDSTAND



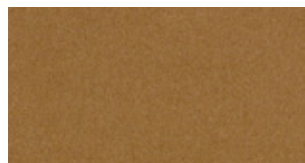
TE08 - AMBIENCE



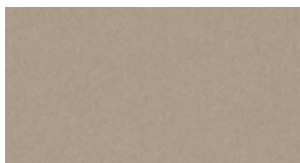
TE09 - ADORNMENT



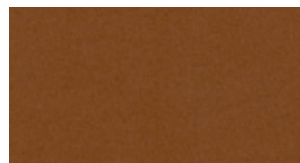
TE15 - FARMLAND



TE20 - GAZELLE



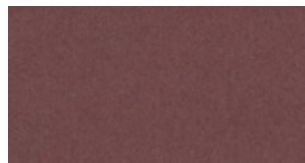
TE21 - SHITAKE



TE22 - FLAXSEED



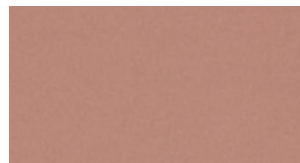
TE25 - BURGUNDY



TE27 - PETUNIA



TE28 - CAMPSITE



TE24 - FLOWERY



TE04 - BATTLESHIP

